



# OFSSGN LISTSERVS

## YOUR TOOL FOR COMMUNICATION!

### DID YOU KNOW?

YOU CAN SEND OUT QUESTIONS, RESOURCES, DISCUSSION TOPICS AND MORE TO OREGON'S FARM TO SCHOOL NETWORK WITH JUST AN EMAIL!



### Step 1: Identify the correct listserv!

**For Garden Educators:** [ofssgngardeneducators@pogroups.org](mailto:ofssgngardeneducators@pogroups.org)

**For Early Care Educators:** [farm2ece@pogroups.org](mailto:farm2ece@pogroups.org)

**For Non-profit groups:** [ofssgnnonprofits@pogroups.org](mailto:ofssgnnonprofits@pogroups.org)

**For Nutrition Services:** [ofssgnsdnutritionservices@pogroups.org](mailto:ofssgnsdnutritionservices@pogroups.org)

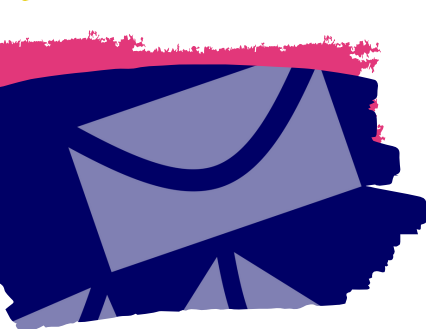
**For Farmers/ Growers/ Distributors:**

[ofssgngrowersdistributorsaggroups@pogroups.org](mailto:ofssgngrowersdistributorsaggroups@pogroups.org)



### Step 2: Craft your message!

Are you looking for high school garden curriculum, information on a grant, a new recipe, feedback on a garden safety manual or anything in between? Ask your community of fellow farm to school educators, growers/ distributors/ farmers, non-profit groups!



### Step 3: Send your message!

Write an email as you normally would, and put the listserv address chosen from Step 1 above into the "To" line. When you send your email, it will go to a moderator who will review/post your message. Moderators review all messages prior to posting to ensure that they are appropriate and going to the right target audience.